



ADTESU

Smart Panel
Interactive Display



www.adtesu.com

PRODUCT **BROCHURES**



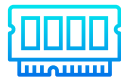
The Pinnacle of **Innovation.**

User-Friendly Interface: Android 15 offers a sleek, intuitive interface that ensures a smooth and enjoyable user experience.

Enhanced Security: With advanced security features, your data and applications are protected, giving you peace of mind.

Seamless Updates: Stay up-to-date with the latest features and improvements, ensuring your device remains at the cutting edge of technology.

Android 15



RAM 32GB

This high capacity 32 GB RAM ensures that your device can handle **multiple applications** simultaneously without any lag. Whether you're running complex software, streaming videos, or multitasking, you'll enjoy smooth performance every time.



FLASH 512GB

With an expansive 512 GB of storage, you have ample space for all your files, apps, and media. **Store large** presentations, videos, documents, and more without worrying about running out of space. Enjoy seamless multitasking and quicker access to your favorite content.



HIGH-PERFORMANCE. MEET INTERACTION.

RK3588 interactive screen - Innovating **learning** and **collaboration**, redefining technology for **education** and **business**.

Best Performance Interactive Screen For **Education and Business**



Experience the power of an intuitive app-based user interface that **makes teamwork a breeze**. Whether in the classroom or the boardroom, our robust whiteboard functionality allows for **real-time sharing and brainstorming**, taking your productivity to new heights.

8nm
Lithography Process

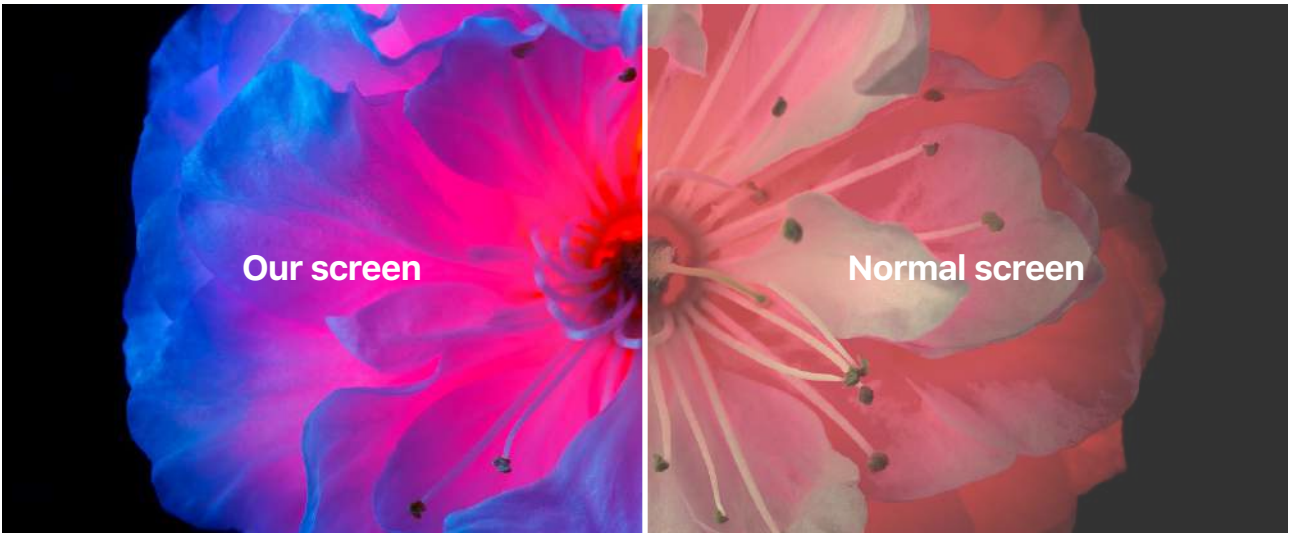
Octa-core
CPU

2.4 GHz
Frequency

6Tops
Computing Power

8K Video
Video Decoding

EDLA
Certified Interactive



Brighten Your World.

Radiant Brightness

500 cd/m²

With a dazzling brightness of **500 cd/m²**, every image, video, and presentation shines with exceptional clarity and vibrancy. Experience visuals like never before, **no matter the lighting conditions.**



Enjoy for more.

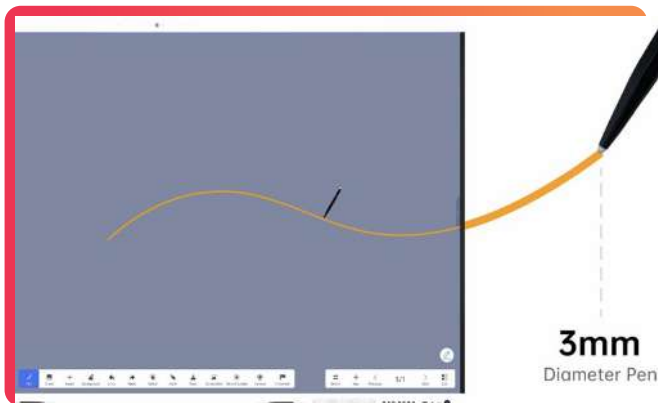
50.000 hours

Longevity Redefined

Engineered to last, our Interactive Display boasts an impressive lifespan of **50,000 hours**. Count on consistent performance and unmatched durability, making it a valuable **long-term investment** for all your professional and educational needs.

TOUCH

Up-to 40 points of touch



Naturally Smooth Writing with Digital Accuracy

Write, annotate, and collaborate during presentations with a pen-on-paper feel. With dual-pen recognition to support group collaboration, and Ultra Fine Touch technology and **3mm tipped pens for lag-free** digital precision, offers unparalleled writing accuracy with a **natural flow**.

Palm Rejection

Palm recognition technology **minimizes** errant touch inputs from palms, wrists, sleeves, etc., so that users can write and annotate **freely**.



8K RESOLUTION

With Imense Picture Quality

A dynamic display range has **8K video resolution** with an unparalleled visual experience offer true to life color and picture quality, enhances any classroom or meeting room experience and **adds life to it**.



ZERO⁺ Bonding Technology

Zero bonding technology ensures high precision touch and dust free clarity screens.

ZERO BONDING | HIGH PRECISION TOUCH | DUST FREE

Multiple Ports



- HDMI OUT
- Type-C Out
- Bluetooth 5.2
- USB 3.0
- USB-C In
- NFC
- WIFI 6, 2.4G/5G
- 802.11ax.
- Magnetic pen tray
- 20W Front facing speakers
- Finger Print Module
- Light Sensor
- PM2.5 Sensor



64MP AI Camera Auto Framing

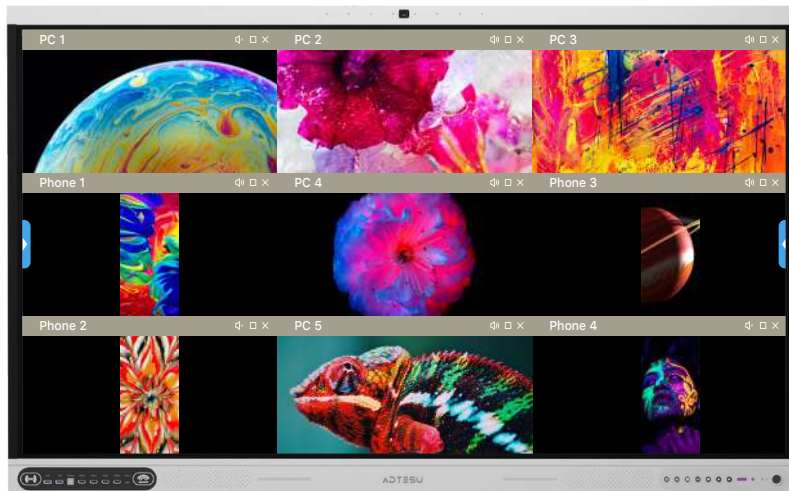
With auto-framing, the ADTESU display automatically adjusts to achieve **the best angle** based on the number of participants and their location, so it feels **like a face-to-face** interaction.



8 Array Microphones With Speaker Tracking

8 microphones and speaker-tracking technology locate the sound source in real-time, ensuring the speaker is always the **center of attention**.

8 Array **10-meter** **AI noise reduction**



EShare ^E

You can share **up to 9 devices** to your **ADTESU Smart Panel Interactive Display**

1. Stream any audio or video file to your Interactive Display.
2. Use your smartphone as Remote Control for your Interactive Display.
3. Mirror the screen of Android device to your Interactive Display.
4. Mirror Interactive Display screen to smartphone and touch the screen directly to control Interactive Display, just like you are touching your Interactive Display.

Open Pluggable Specification (OPS) Computer



13th & 14th Gen. Windows 10 & 11

Our OPS computer is **ideal** for a range of applications, including educational institutions, businesses, healthcare, and dynamic advertising, ensuring smooth and efficient operation with the **latest processors and ample memory**.

It supports multimedia content, interactive applications, and multitasking.

Immersive Audio.



Enhanced Interaction.

EQUIPPED with powerful front speakers (**20W x 2**) and a robust subwoofer (**20W**), this panel ensures every word and sound is crystal clear, making it perfect for both classrooms and meeting rooms. The total power amplifiers (**≤60W**) guarantee that everyone, from the front row to the back, **will hear every detail without strain.**

Front Speakers

20Wx2

Enhanced Learning Experiences: Engage students with immersive audio and clear visuals, ensuring that lessons come to life.

Professional Presentations: Deliver impressive presentations with high-quality sound, keeping your audience engaged.

Subwoofer

20W

Effective Meetings: Facilitate productive meetings with clear communication, whether it's a small team discussion or a large conference.

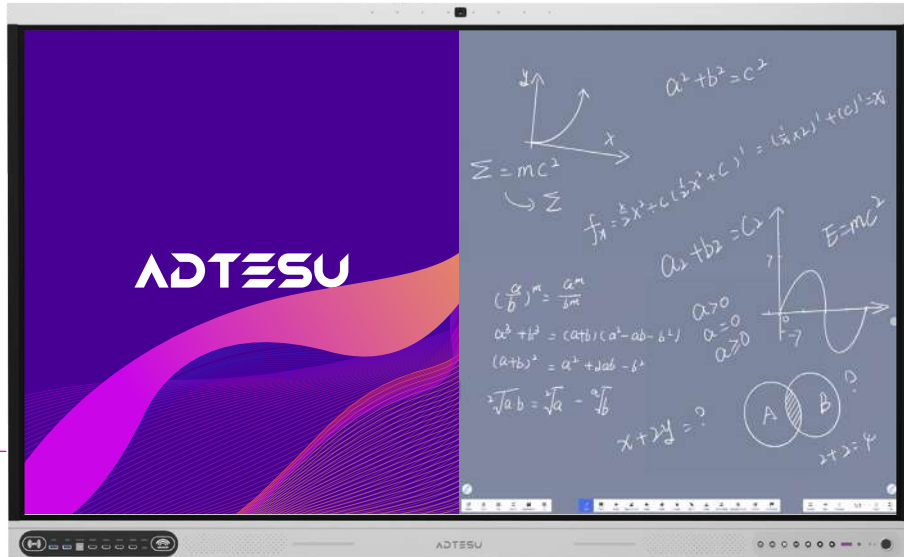
Seamless Integration: Easily integrate with your existing systems for a smooth, efficient workflow.

Power Amplifiers

≤60W

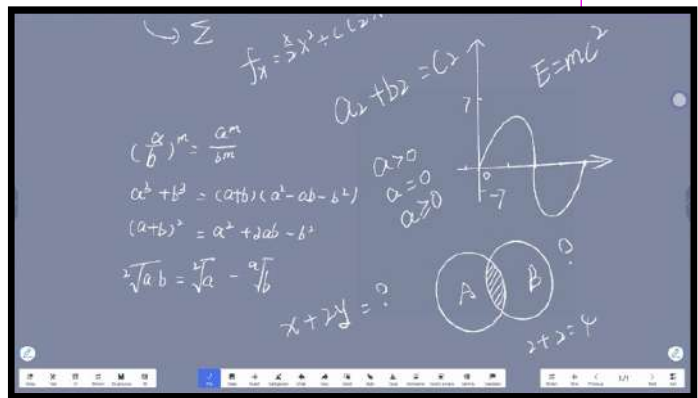
Type-C

Versatile Connectivity



Experience seamless connectivity with the **versatile Type-C** port. Effortlessly **connect** to web cams, microphones, speakers, USB flash drives, and wired networks by **simply plugging** in a cable.

And with up to 100W of charging performance, your device stays powered throughout your lessons.



Transform Images into Actionable Insights

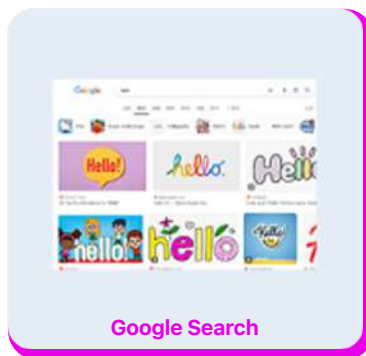


From Image to **Insight**

Capture.

Convert.

Conquer.



"With RK3588, **capturing** an image is just the beginning. **Convert** it into text and **conquer** the information it holds. Whether it's documents, receipts, or notes, RK3588's OCR turns images into insights at your fingertips."

Transform Your Writing with Umind Advanced

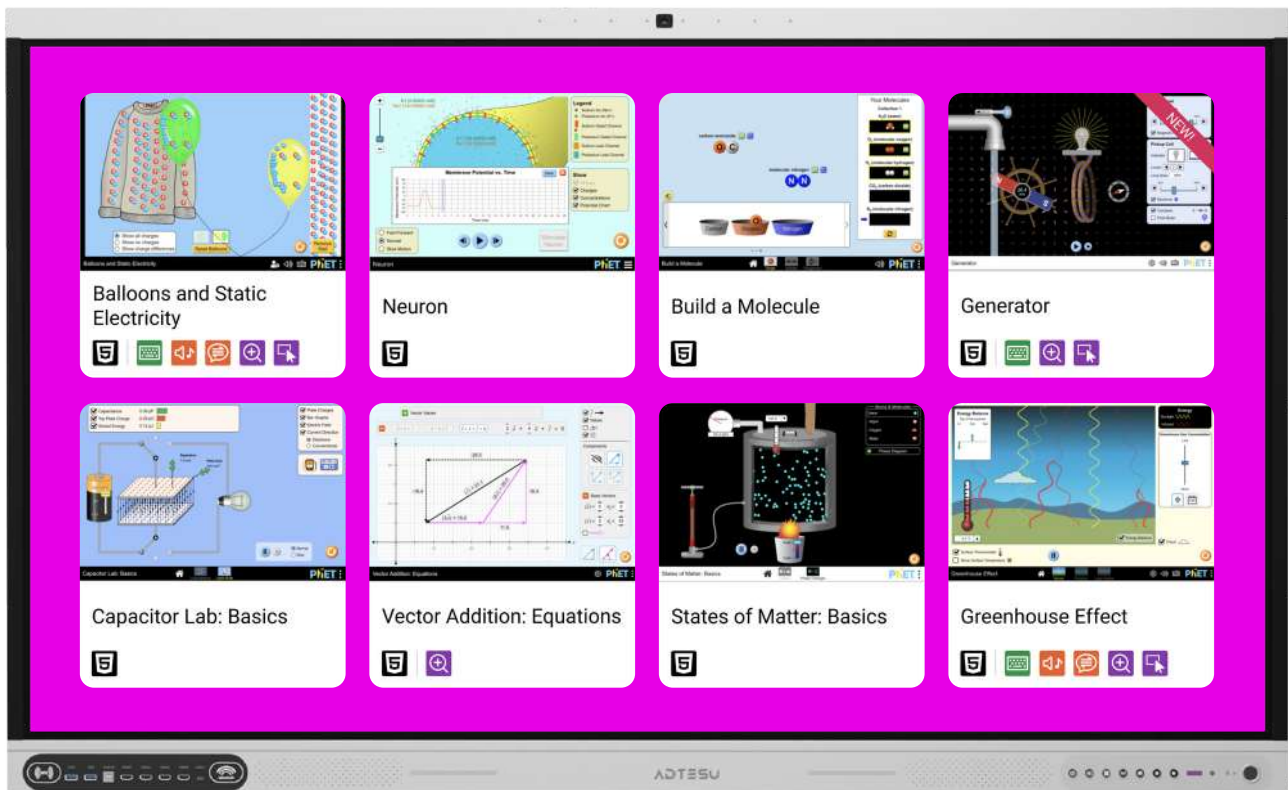
AI Pen

AI-powered pen tools, integrated into our Umind whiteboard software, offer unparalleled accuracy and intuitive functionality.



Education is the foundation upon which we build our future. It is a powerful tool that opens doors to new opportunities, broadens our horizons, and empowers us to achieve our dreams. In a rapidly changing world, education provides us with the knowledge, skills, and critical thinking abilities necessary to navigate and succeed in various aspects of life.

Ignite Learning with RK3588 Where Every Subject **Shines**



Interact. Discover. Learn.

PhET Interactive Simulations creates free interactive math and science simulations. PhET sims are **based on extensive education research** and engage students through an intuitive, game-like environment where students learn through exploration and discovery.

170
interactive
simulations

3604
teacher-submitted
lessons

129
language
translations

PHYSICS



MATH &
STATISTICS



CHEMISTRY



EARTH &
SPACE



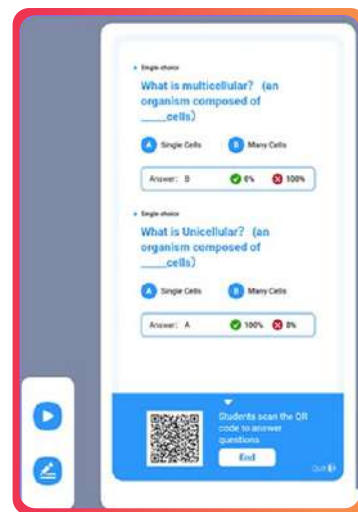
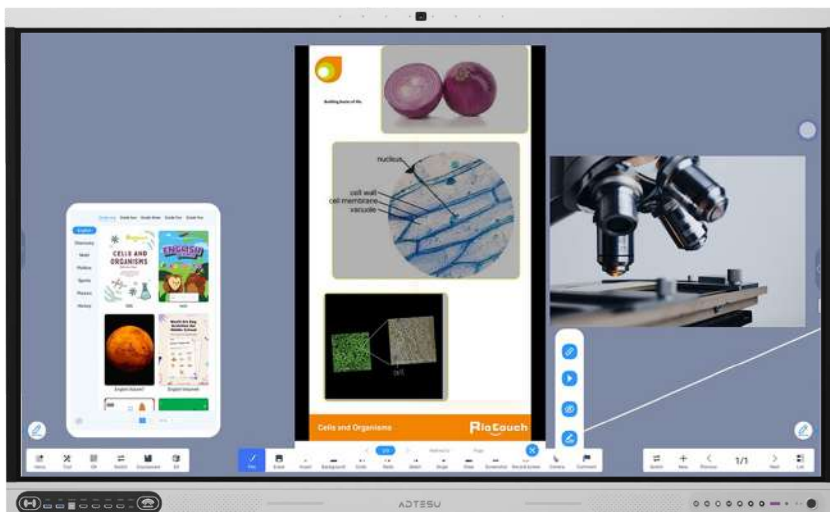
BIOLOGY



Empowering Education, Amplifying Insights

Your gateway to a world of science and math

From primary to higher education, our platform, covers a wide range of subjects, igniting curiosity and fostering deep understanding. Customize your curriculum, create dynamic content, and contribute to a learning revolution that transforms teaching and empowers learners **to achieve more.**"

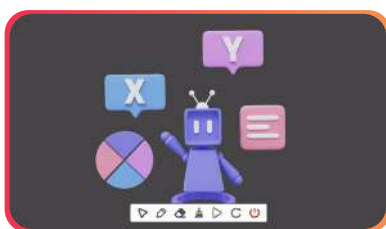


RK3588: The Core of Your 3D Vision, Transform Ideas into Reality



Natural Sciences

Anatomy and Physiology, Geography and Earth Sciences, Chemistry and Molecular Structure, Biology and Ecology, Astronomy and Space Science, Physics and Mechanics.



Engineering and Technology

Engineering and Robotics



Social Sciences

Environmental Science and Sustainability



Mathematics

Mathematics and Geometry



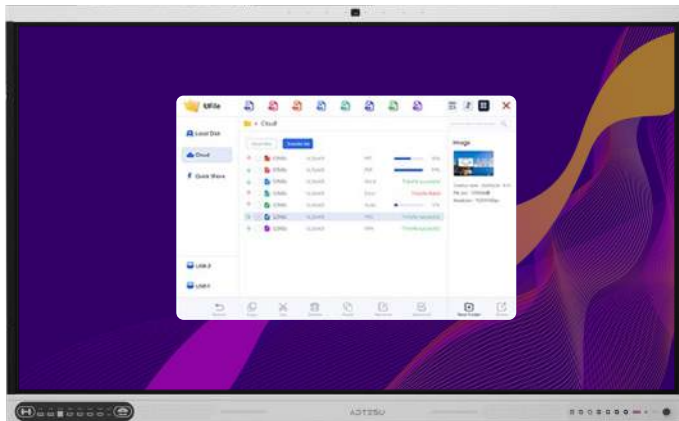
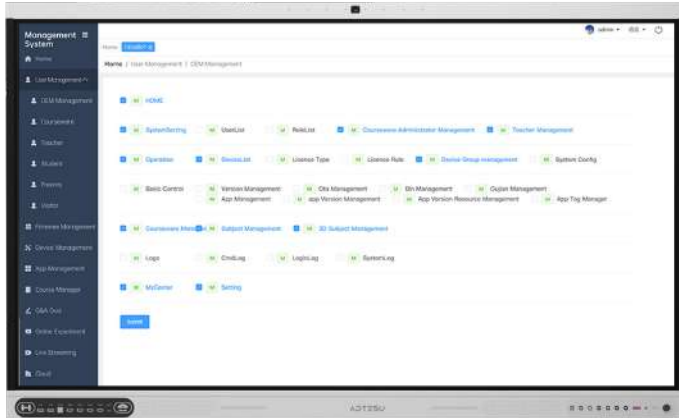
Arts

Art and Design

DMS:

**"Simplify.
Streamline.
Secure."**

Secure your documents, smarten your management, and enjoy a seamless experience, all in one **unified platform.**"



Cloud Sync, Seamless Harmony

"Experience cloud sync like never before. Our service harmonizes with Google, OneDrive, and more, uniting all your data in **perfect sync.**"

Secure, Smart, and Social **Cloud**

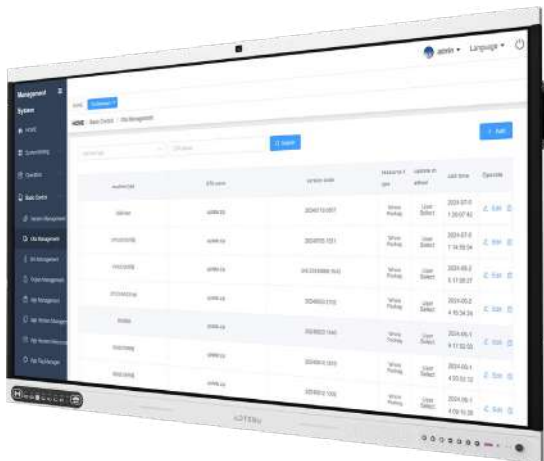
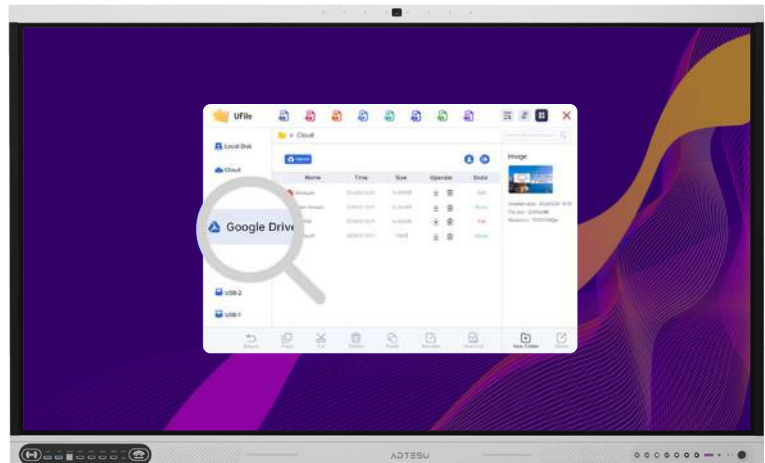
"Secure your data, smarten your access, and socialize your cloud experience. Our service supports Google, OneDrive, and more for a truly social cloud."



Multiple User Login

Beyond the Drive, into the Cloud

- Step beyond the drive and into the cloud with our service.
- Multi-user functionality meets Google, OneDrive, and other cloud giants.



With an **over-the-air** (OTA) update, wireless delivery of new software, firmware, or other data to mobile devices is made to your ADTESU Smart Panel Interactive Display.

**Immediate. Impactful.
Improving.**

The Power of Now, in Every Update

Beyond the Cloud, Into the **Ecosystem**



Official access to the **Google Play Store**

The presence of the **official Google Play Store** allow users to download and install apps onto their board. Having Google Play with its extensive library of educational games and productivity tools, available on a large interactive screen opens up many possibilities in terms of **teaching and work**.

Better device security



Play Protect checks apps for suspicious behavior. It also prevents you from downloading potentially harmful apps to your devices and even scans and removes previously installed apps that exhibit malicious behavior.

Seamless integration with **Google** tools



Just log into your Google account and use all your favourite Google apps. Apps such as Google Meet, Docs and Slides, Google Play Store, Google Classroom, Google Chrome.

Specifications

Model	ADS65PRO	ADS75PRO	ADS86PRO	ADS98PRO	ADS105PRO
Panel					
Diagonal display size	65 inch	75 inch	86 inch	98 inch	105 inch
Bezel color	Aluminum frame (White color)				
Panel type	Ultra HD Direct type LED				
Active area (mm)	1428.48 (H) x 803.52 (V)	1649.66 (H) x 927.93 (V)	1895.04 (H) x 1065.96 (V)	2187.8 (H) x 1242.8 (V)	2487.4 (H) x 1070.6 (V)
Resolution	3840*2160/60hz			5120 x 2160/60hz	
Pixel Pitch	0.372 mm x 0.372 mm	0.429 x 0.429	0.4935 x 0.4935	0.5622 x 0.5622	0.4785 x 0.4785
Hardness Glass	Mohs-7 level				
Glass Panel	Anti-Glare glass with zero bonding				
Aspect Ratio	16:9				21:9
Contrast Ratio	1200:1 (type)				4000:1 (type)
Dynamic Contrast Ratio	4000:1		9500:1		14000:1
Brightness	500cd/m2				
Color depth	1.07 billion colors				
Viewing angle	178°				
Lifespan	50,000 hours				
Touch					
Touch Technology	IR touch				
Multi Touch	Max 40 points(Windows)				
Multi Writing	Max 20 points(Windows)				
Touch Precision	1 mm (over 90% Area)				
Auto-Calibration	Yes				
Anti-light	Yes				
Minimum object size	2mm				
Touch Response Time	First Point <2 ms, Continuation <8 ms				
Supporting OS	Windows 7/8/10/11; Android; Mac; Linux; Chrome OS				
Sound					
Front Speakers	20Wx2				
Subwoofer	20W				
Total Power Amplifiers	≤60w				
Microphone					
Type	Wide-area microphones				
Number of Microphones	8				
Auto switch (Windows/Central)	Yes				
Disconnectable	Yes				
Camera					
Number of images	6400M / 64MP				
Maximum resolution and frame rate	4208 x 3120 (30fps)				
FOV (field of view)	120°				
Front Side Connections					
Front Ports	Type-C *1 line; HDMI IN *3 line; USB3.0 *2; USB-B *1				
Front Keys	Power on/off; Signal source; Setting; ECO; Menu; Volume down; Volume up				
NFC	Support				
Fingerprint	Support				
Bottom Side Connections					
Earphone	1				
MIC IN	1				
SPDIF OUT	1				
RS232	1				
Touch USB (USB B)	2				
HDMI IN	1				
HDMI OUT	1				
RJ45	1				
TYPE C OUT	1				
Android USB2.0	1				
Android USB3.0	1				
TF CARD	1				
WIFI	WIFI5 + WIFI6 + AP				
Windows OPS Slot	80-pins OPS slot				
Bluetooth version	5.2				
Operating System					
Android Version	Android 15.0				
Chip	Rockchip RK3588				
CPU	quad-core Cortex-A76 and quad-core Cortex-A55, up to 2.4GHz				
GPU	Mali-G610 MC4				
RAM	32GB				
Flash	512GB				
Compliant with	Windows; Mac; Linux; Chrome OS				
Over-the-Air Updates (OTA)	YES				
Light Sensor	YES				
NFC Reader/Writer	YES				
Temperature, humidity and air quality three-in-one sensor	YES				
Fingerprint module	YES				
General					
Power Supply	~ 100-240 V (50/60Hz)				
Switch On / Off	Yes				
Standby Energy Consumption	≤ 0.5 Watt				
Power Consumption	Maximum< 290W Eco<75W	Maximum< 320W Eco<75W	Maximum< 350W Eco<75W	Maximum < 510W Eco<75W	Maximum< 460W Eco<75W
Net Weight	45 ±2Kg	55 ±2Kg	70 ±2Kg	110 ±2Kg	140 ±2Kg
Gross Weight	55 ±2Kg	68 ±2Kg	85 ±2Kg	120 ±2Kg	150 ±2Kg
Screen Dimensions (WxDxH)	1470.9 x 97.5 x 897.5 mm	1692.1 x 97.5 x 1021.9 mm	1943.4 x 97.5 x 1166 mm	2250 x 97.5 x 12305 mm	2505 x 97.5 x 1085 mm
Dimensions Package (WxDxH)	1622 x 190 x 1038 mm	1842 x 190 x 1163 mm	2090 x 190 x 1307 mm	2377 x 220 x 1486 mm	2550 x 222 x 1120 mm
VESA Standard	600 x 400 mm	600 x 400 mm	800 x 600 mm	1195 x 220 mm; 630 x 47.5 mm	1195 x 220mm; 630 x 47.5 mm
Certifications	CE: EMC + LVD / ROHS / REACH / FCC/CCC				
Environmental					
Operating Temperature	0°C - 40°C/32 - 100 °F				
Storage Temperature	-20°C - 60°C/-4°F - 140 °F				
Storage Humidity	10% - 90%				
Usage Humidity	10% - 90%				
Accessories					
Accessories	WIFI antenna *5pcs; No ink pen *2pcs, Remote control *1pcs, 1.5m power cord *1pcs, 1.5m HDMI cable *1pcs, 1.5m USB touch cable *1pcs; wall mount kit				



ADTESU

Product Brochures



www.adtesu.com

